

These Items are Garbage:

Do not put these items in the recycling carts:

- Plastic Bags
- Pop or beer paper cartons
- Paper milk cartons
- Pizza boxes
- Plastic tub containers that are not a bottle
- Aluminum Foil
- Any glass that is not a food or beverage container
- Hazardous waste containers (Paint cans, household cleaner bottles, motor oil bottles, etc.)



Printed on 30% post-consumer recycled paper.
Please recycle.

PPSRT STD
U.S. POSTAGE
PAID
MINNEAPOLIS, MN
PERMIT# 2886

Fridley Municipal Center
6431 University Avenue NE
Fridley, MN 55432



City of Fridley Apartment Recycling Guide

*If you're not
recycling, you're
throwing it all away.*

For additional
recycling information
or a Spanish version
of this brochure, call:
(763) 572-3594

What you can recycle:



Recyclable Paper

Place loose or in paper bags in *Papers Only* recycling cart (no plastic bags, please.)



- Newspapers and Magazines



- Any type of paper that comes in your mail



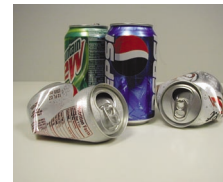
- Dry Food Boxes and Phone Books



- Corrugated Cardboard (Must Flatten)

Recyclable Containers

Place loose or in paper bags in *Containers Only* recycling cart (no plastic bags, please.)



- Aluminum Beverage Cans



- Steel/Tin Cans



- Glass Bottles & Jars (brown, green, & clear)



- Plastic Bottles (no tubs or cartons)